

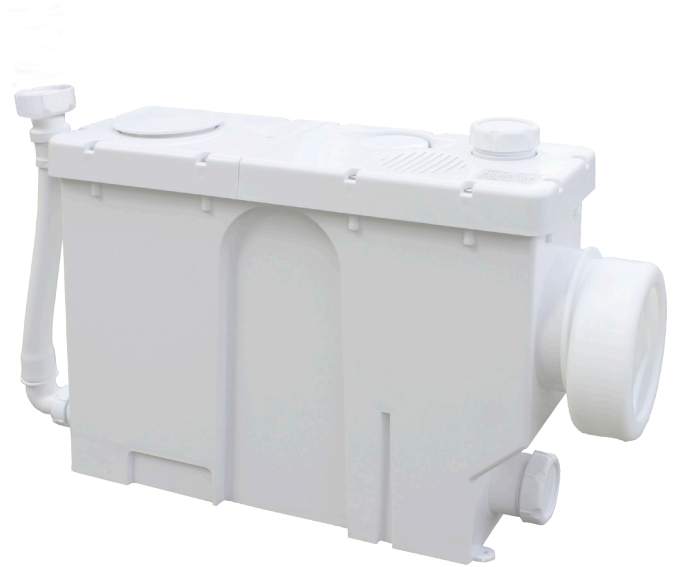
wasteflo

WC4C - Macerator

The Wasteflo WC4C macerator is ideal when transforming any area into a complete bathroom or en-suite.

The slimline design of the Wasteflo WC4C macerator is designed for installation out of sight behind a stud-partition or other enclosed space and is ideal for use with a back to wall or wall-hung toilet.

An innovative watertight cassette unit enables easy removal, cleaning and maintenance of the working parts without having to remove the WC, cistern or pipework.

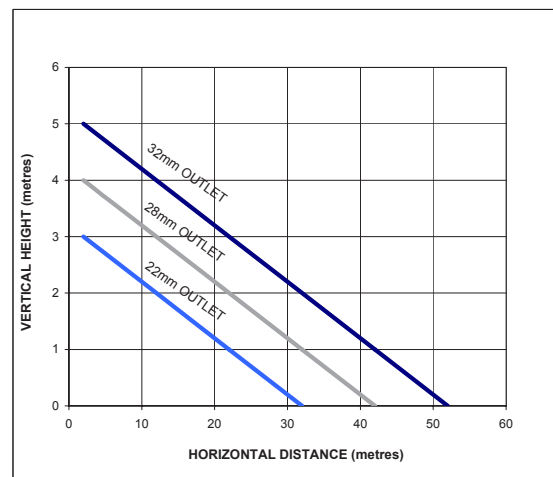


Features

- WC coupling features innovative inbuilt height adjustment (± 16 mm) to accommodate variations in WC outlet position
- Two side inlets suitable for 32 mm (1¼ ") waste pipe to connect to a basin or shower (40 mm (1½ ") inlet adaptor included)
- One top inlet suitable for 32 mm (1½ ") waste pipe to connect to a basin (40 mm (1½ ") inlet adaptor included)
- Outlet - suitable for 32 mm, 28 mm or 22 mm waste pipe
- Pumps up to 5 m vertically or 52 m horizontally
- Maximum flow rate of 90 l/min
- Complies with BS EN 12050
- Typical 50 dB noise level
- Supplied pre-wired with 1.5 m power cable

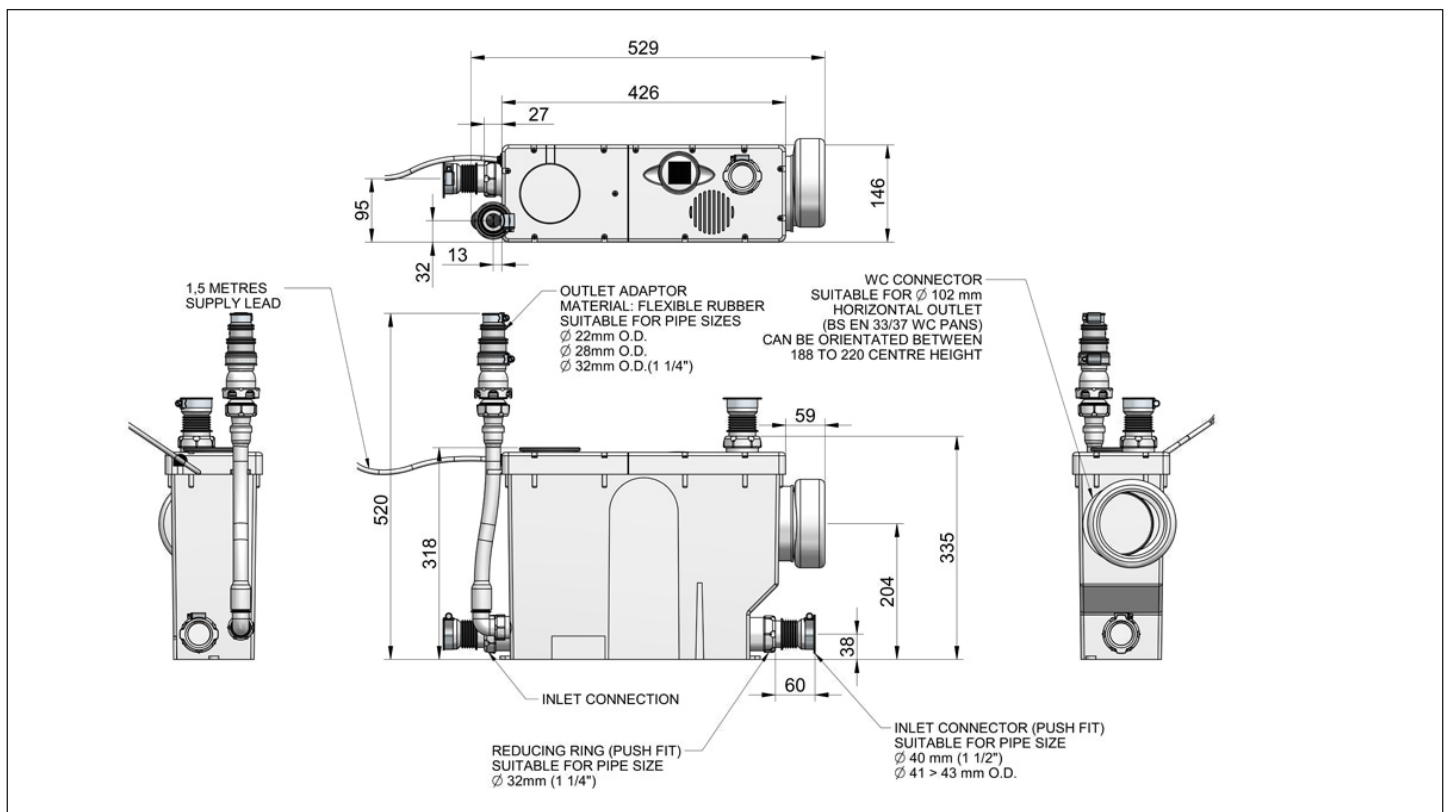
Application

- Macerators are a simple way to pump waste water from a sanitary appliance where there is no local access to a soil pipe



wasteflo

| Pump Model | | WC4C 46653 |
|-------------|----------------------------------|----------------------------------------|
| General | Guarantee | 2 years |
| Features | Adjustable WC coupling | ✓ |
| | Slimline design | ✓ |
| | Easy access cassette unit | ✓ |
| | Noise level | 50 dB (typical) |
| Performance | Maximum head | 5.4 metres |
| | Pumping distance (vertical) | Up to 5 metres |
| | Pumping distance (horizontal) | Up to 52 metres |
| | Maximum flow | 90 l/min |
| | Maximum ambient air temperature | 40 °C |
| Connections | WC | 102 mm dia. |
| | Inlet(s) | 40 mm (1½") dia. |
| | Outlet | 32 mm, 28 mm, 22 mm waste pipe adaptor |
| Motor | Duty rating | Continuous |
| Electrical | Power supply / phase / frequency | 230 V a.c. / 1 / 50 Hz |
| | Current (full load) | 2.2 Amps |
| | Power consumption | 500 Watts |
| | Fuse rating | 5 Amps |
| | Power cable (pre-wired) | 1.5 metres |
| Physical | Enclosure protection | IPX4 |
| | Length | 529 mm |
| | Width | 146 mm |
| | Height (excluding hoses) | 318 mm |
| | Weight (including fittings) | 7.4 Kg |



Stuart Turner Limited reserves the right to amend specifications without notice.